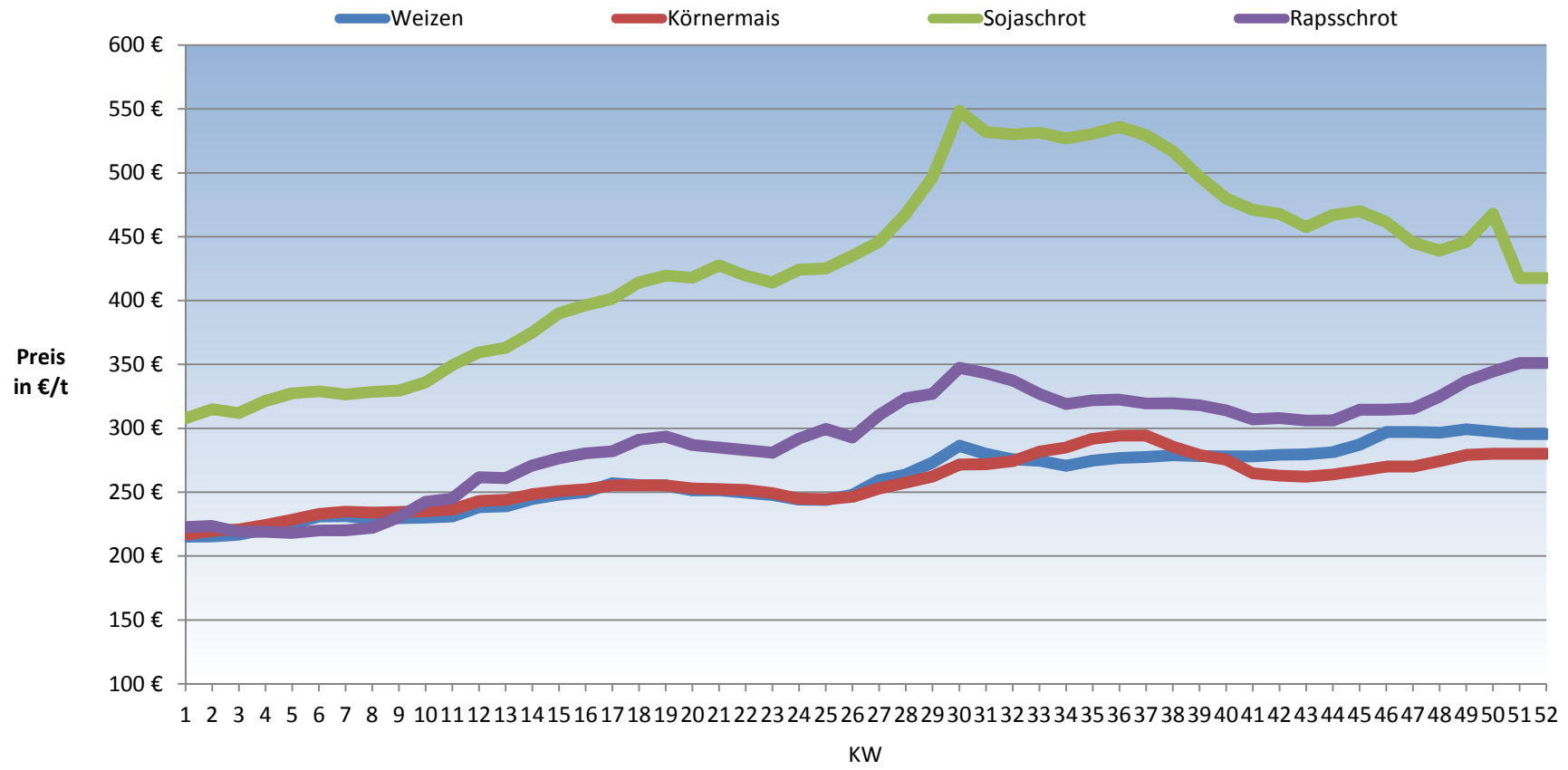
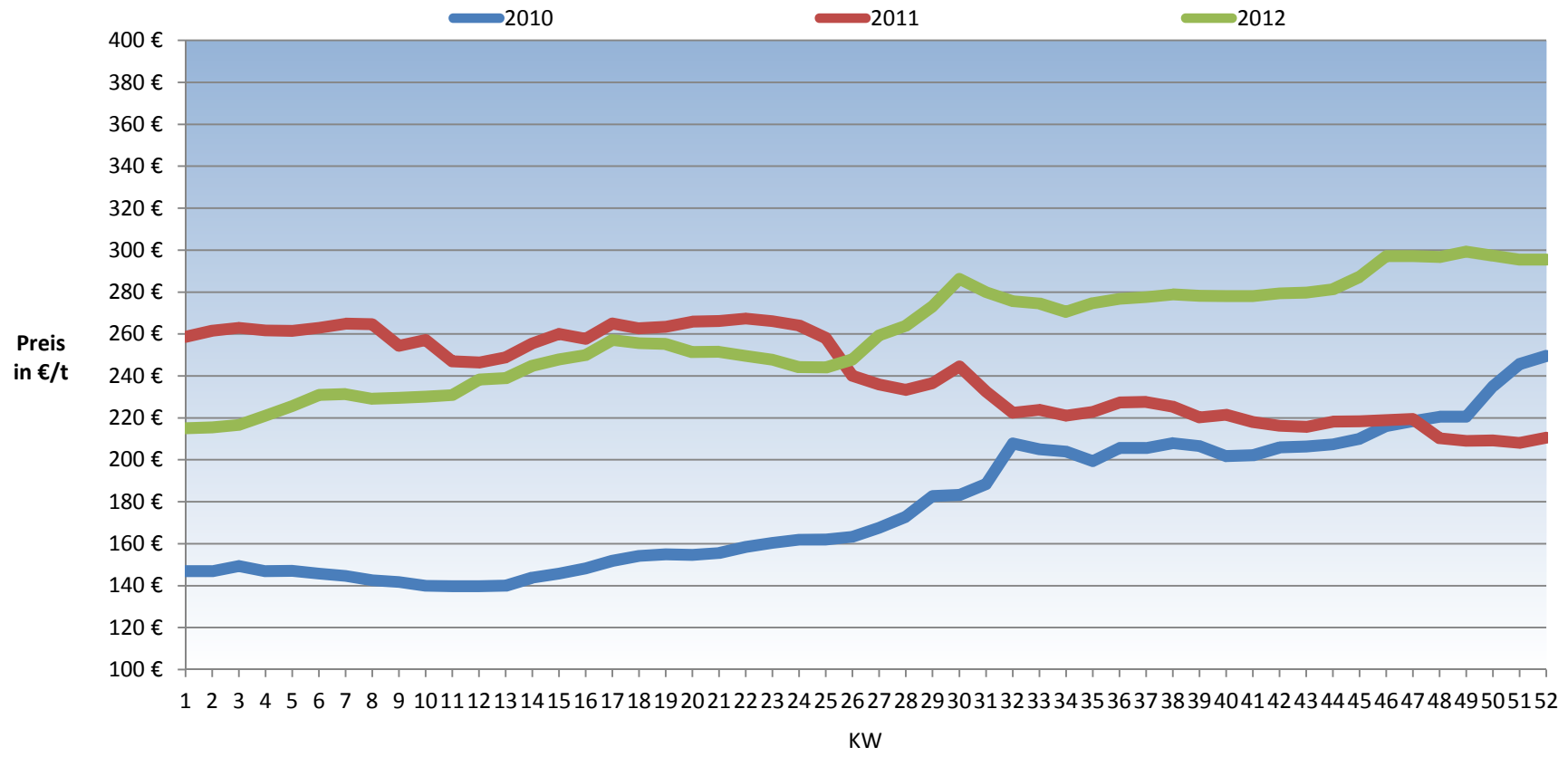


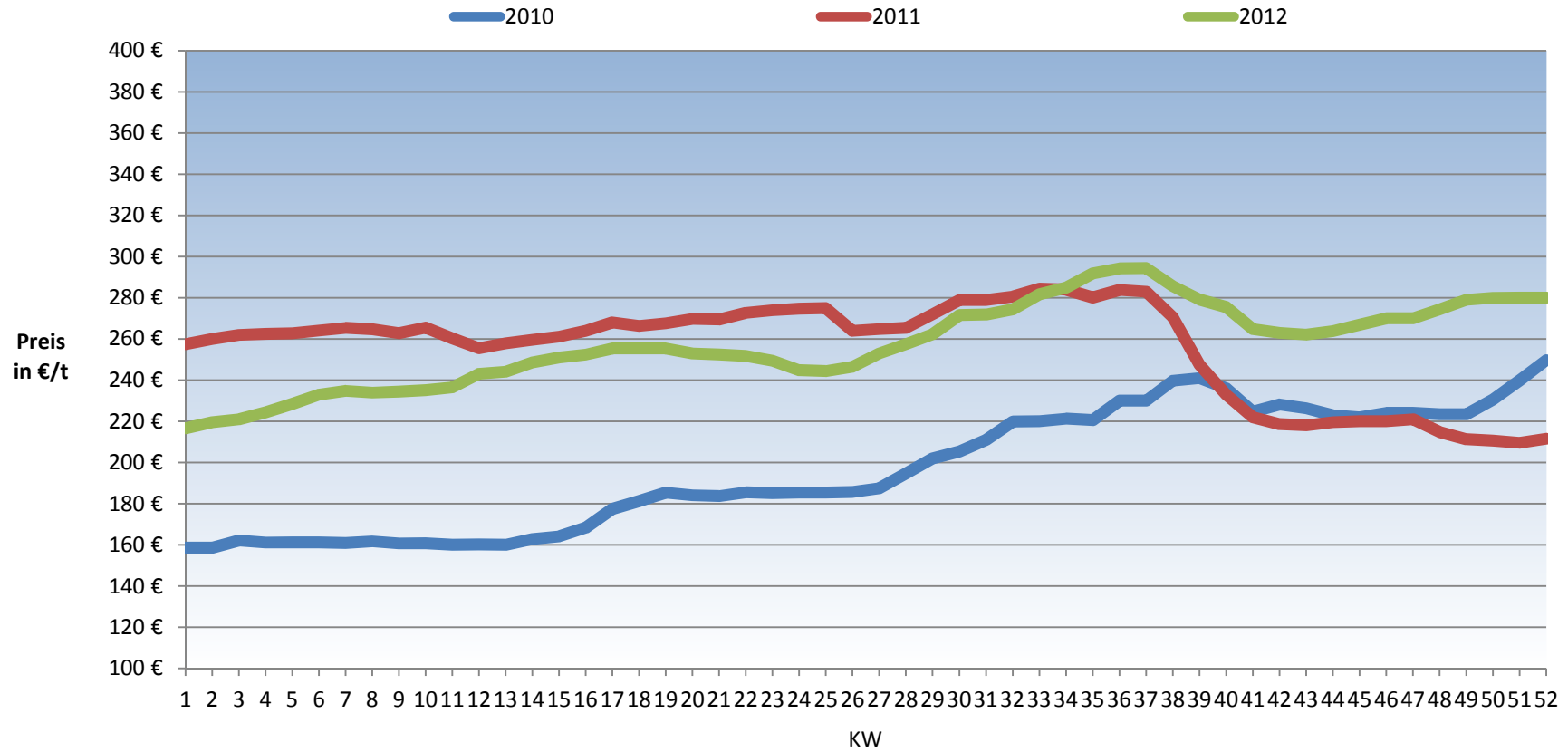
Futtermittelkomponenten 2012



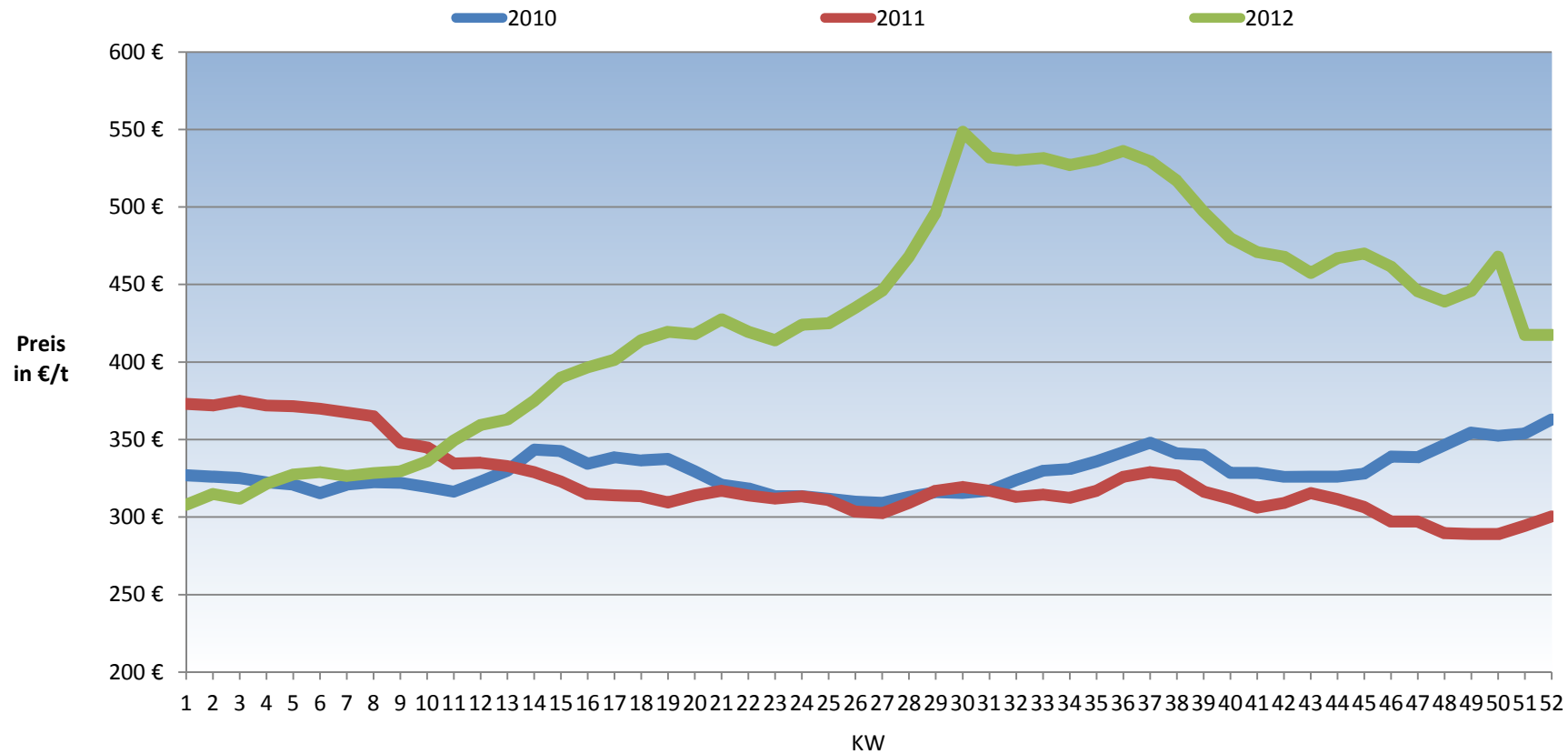
Weizenpreisentwicklung



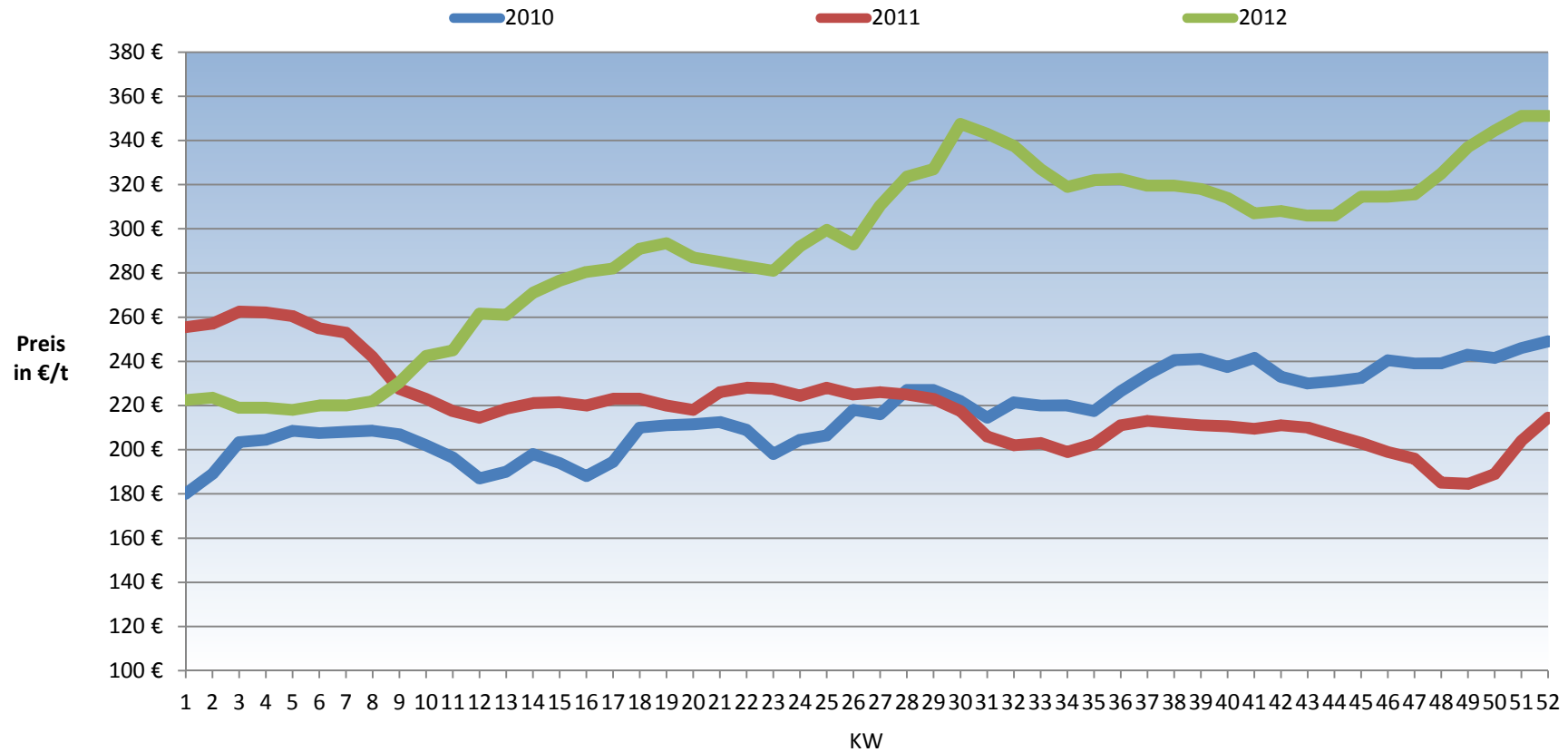
Körnermaispreisentwicklung



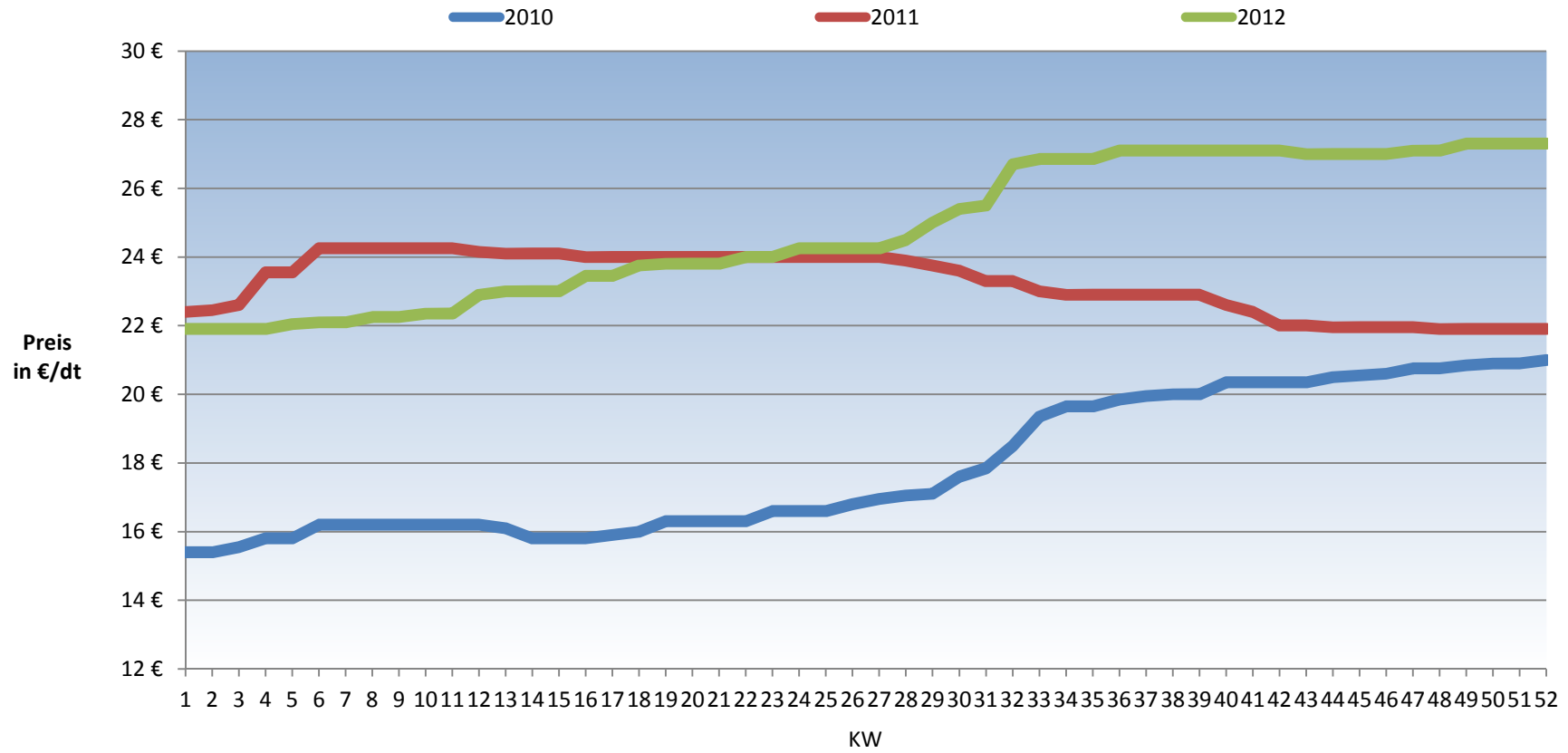
Sojapreisentwicklung



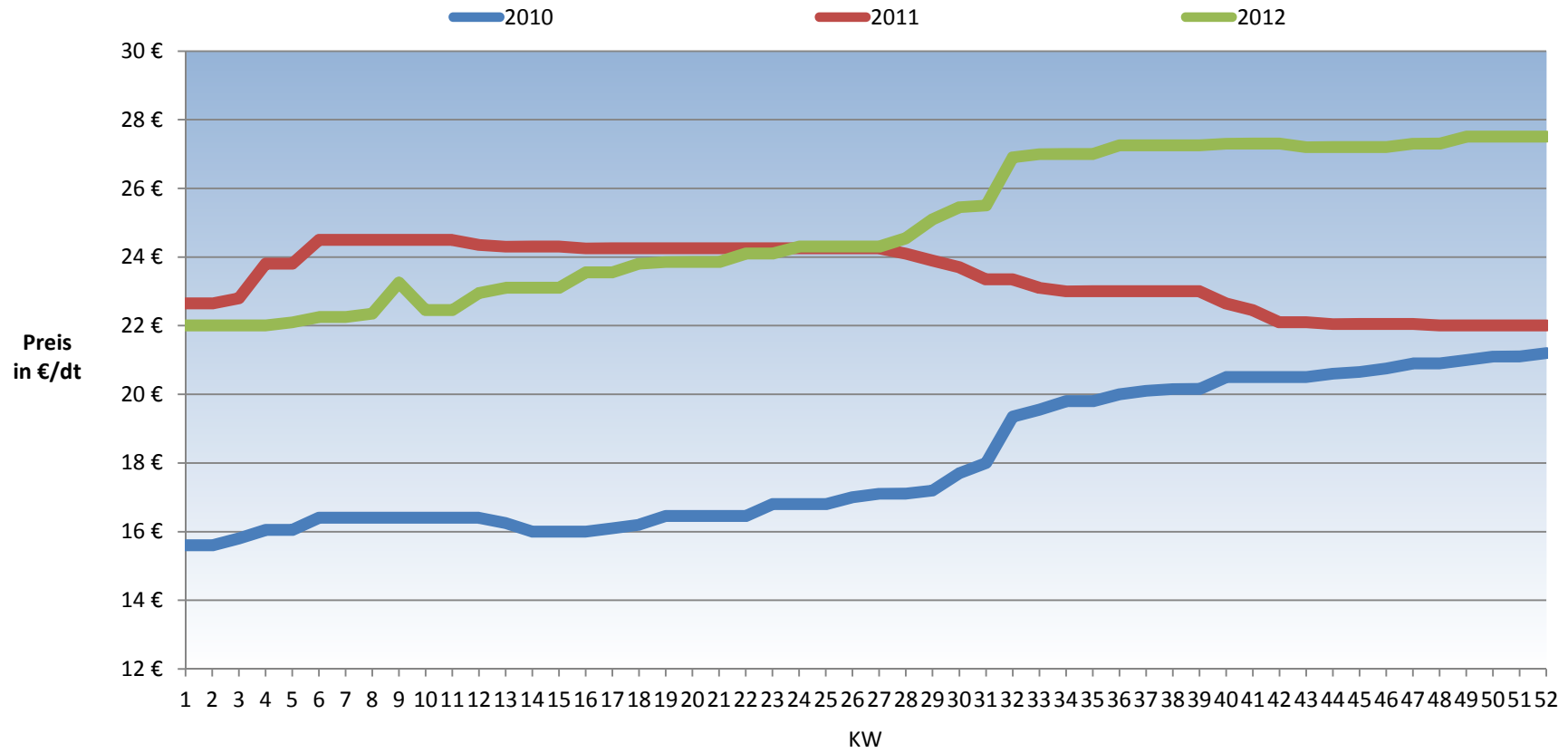
Rapspreisentwicklung



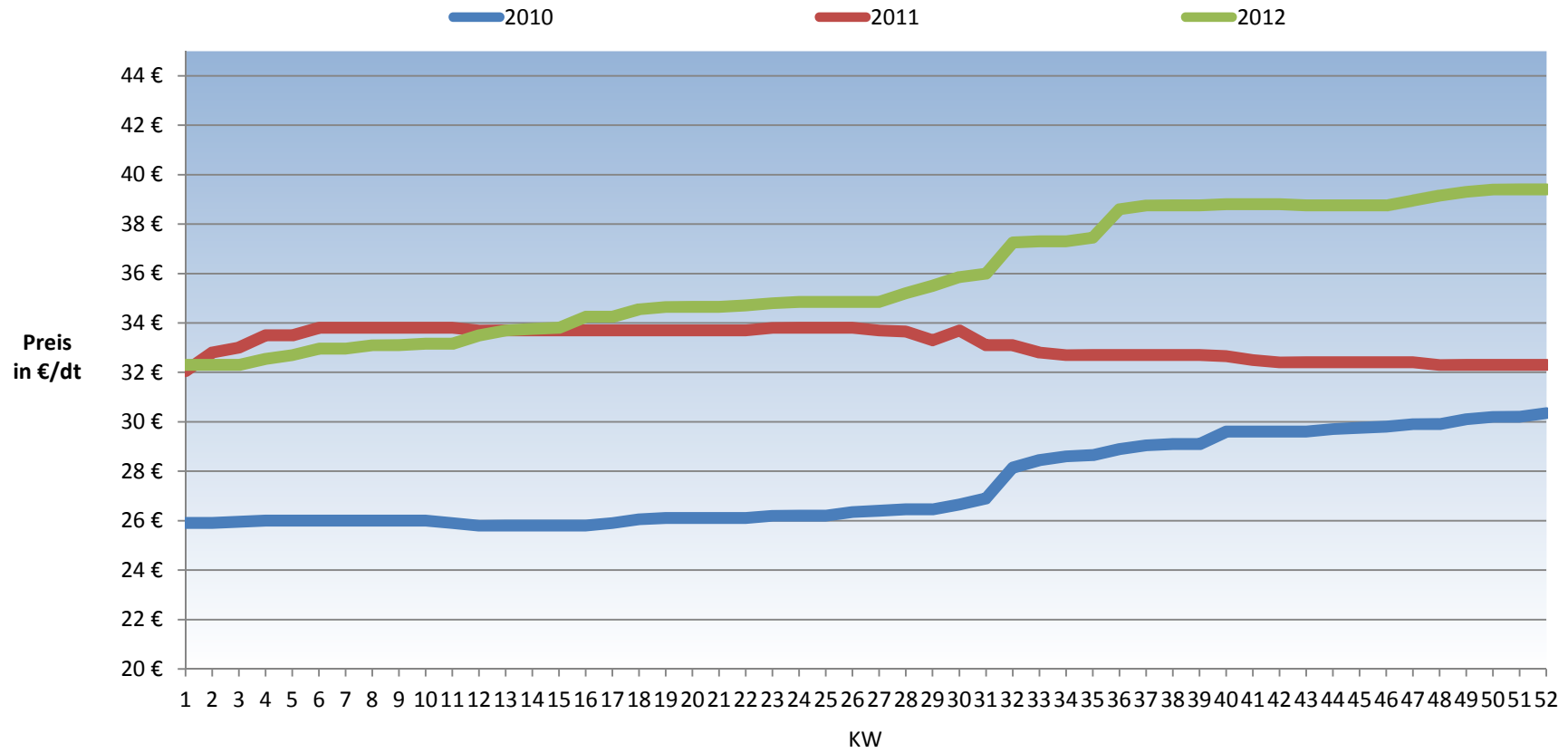
Milchleistungsfutter (18/III)



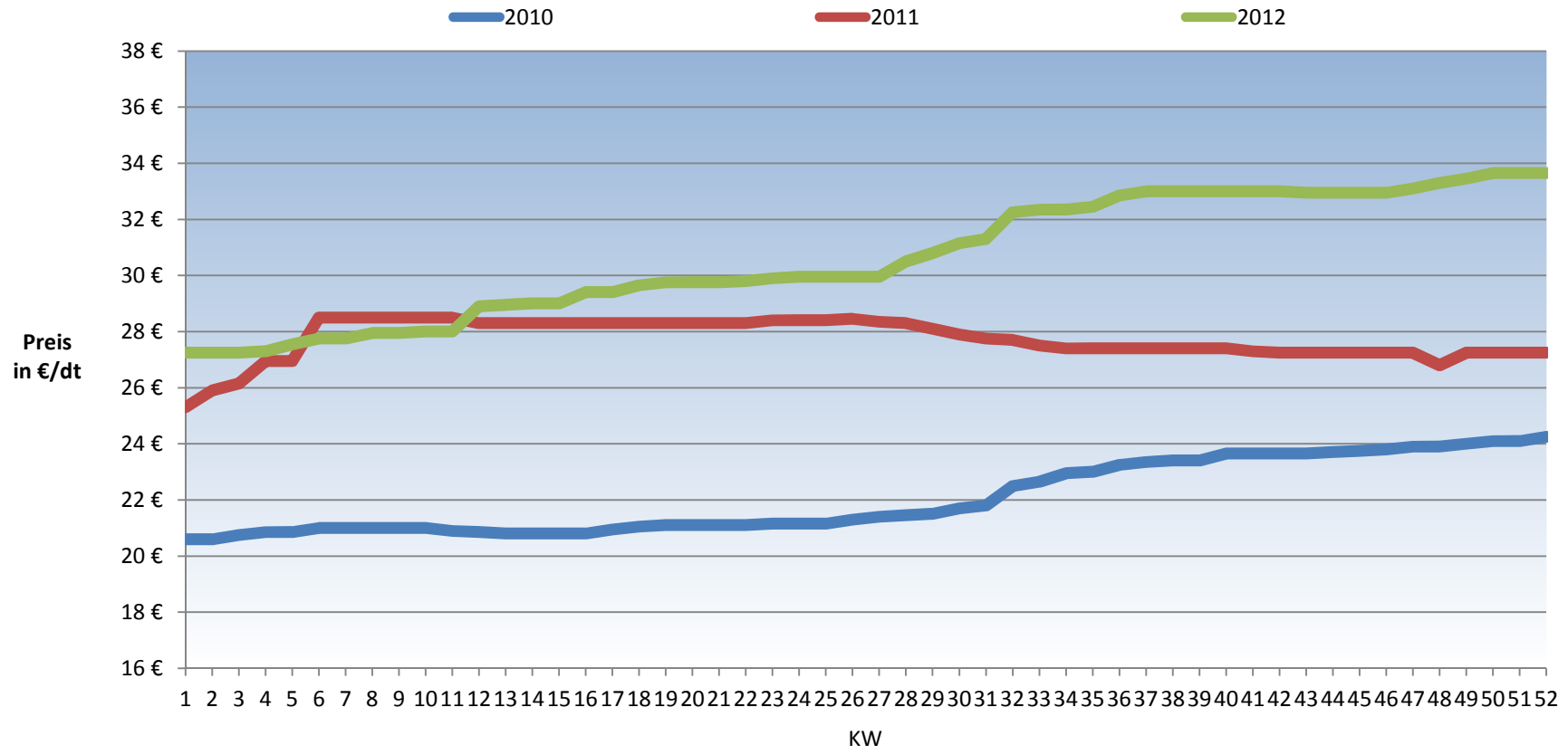
Bullenmastfutter (20/III)



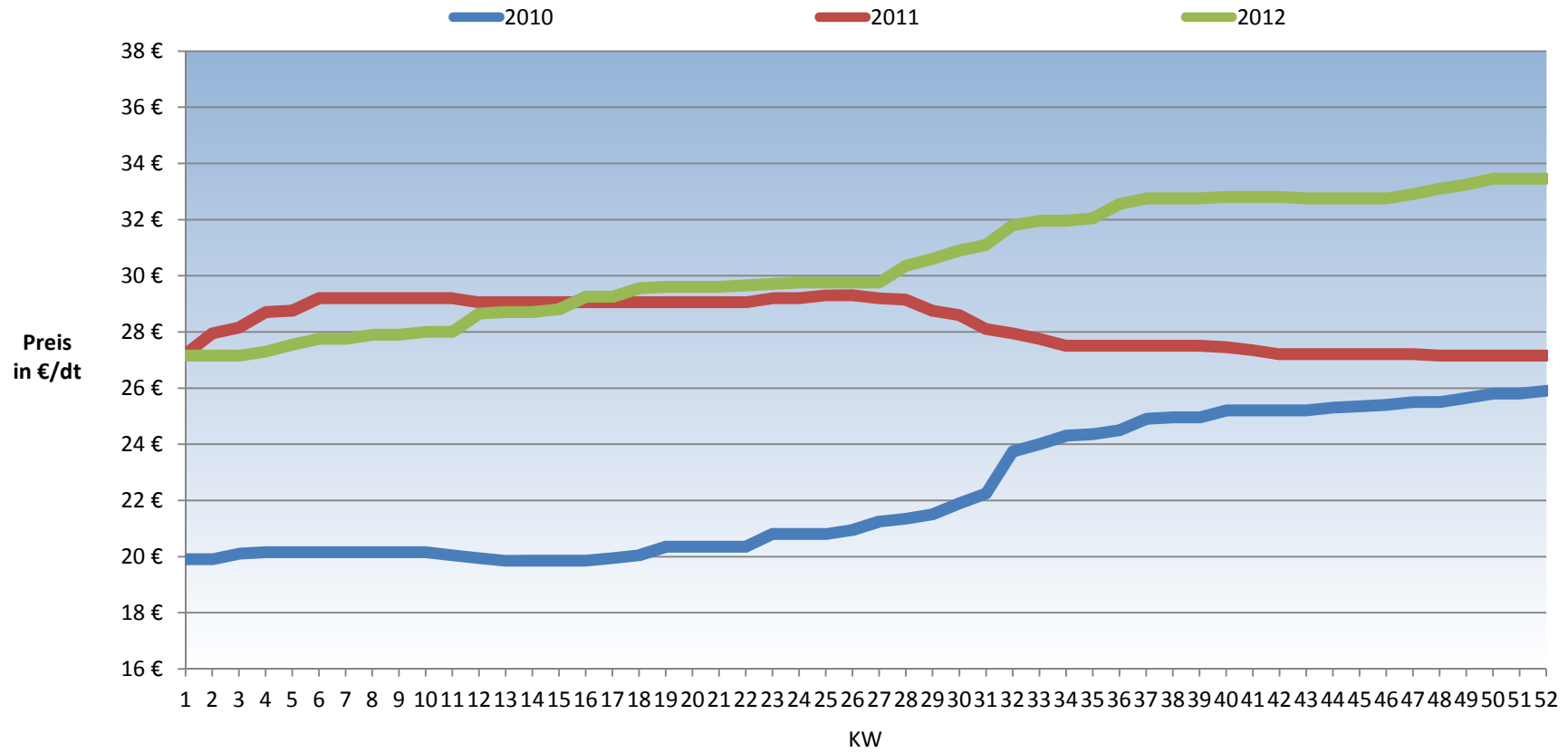
Ferkelaufzuchtfutter



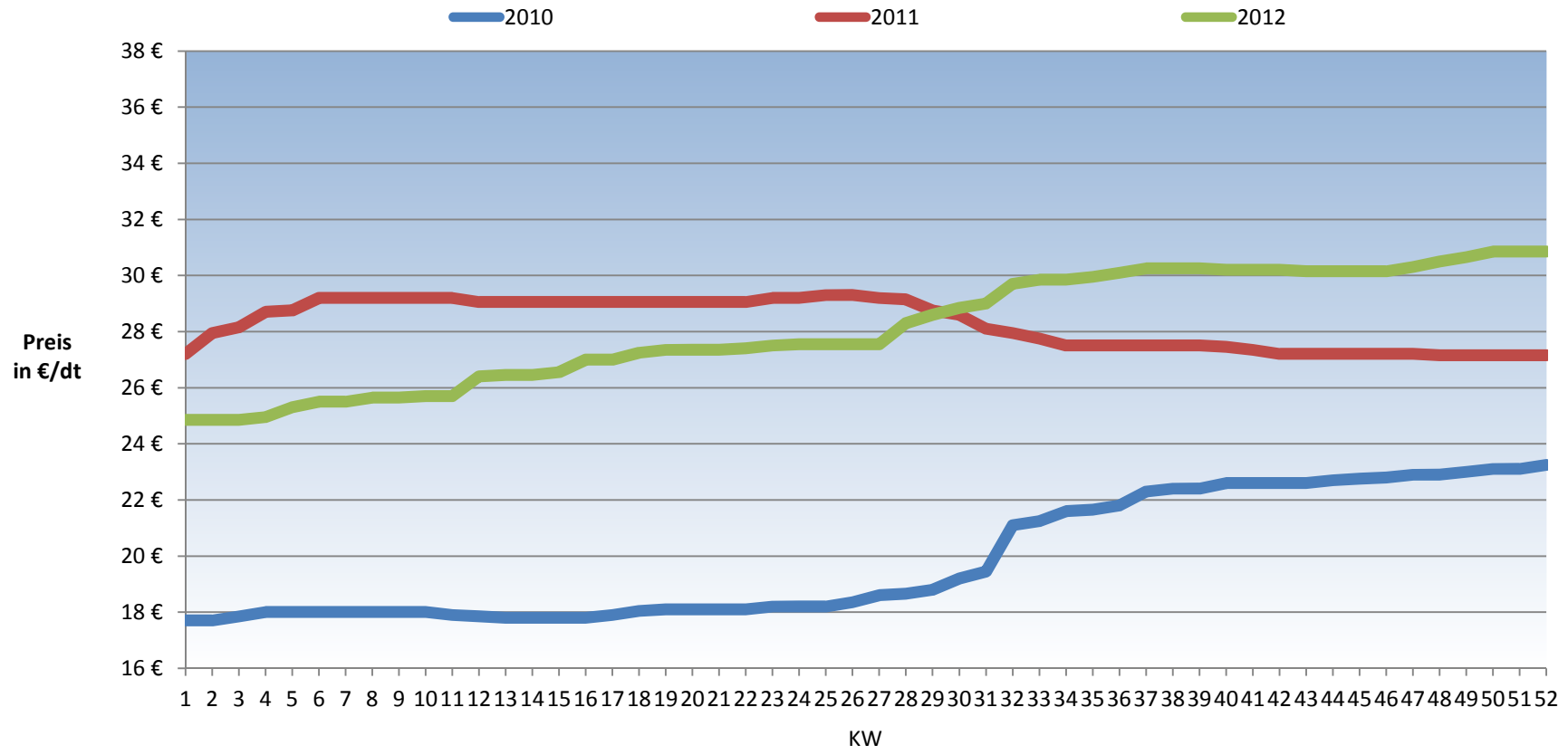
Sauenalleinfutter



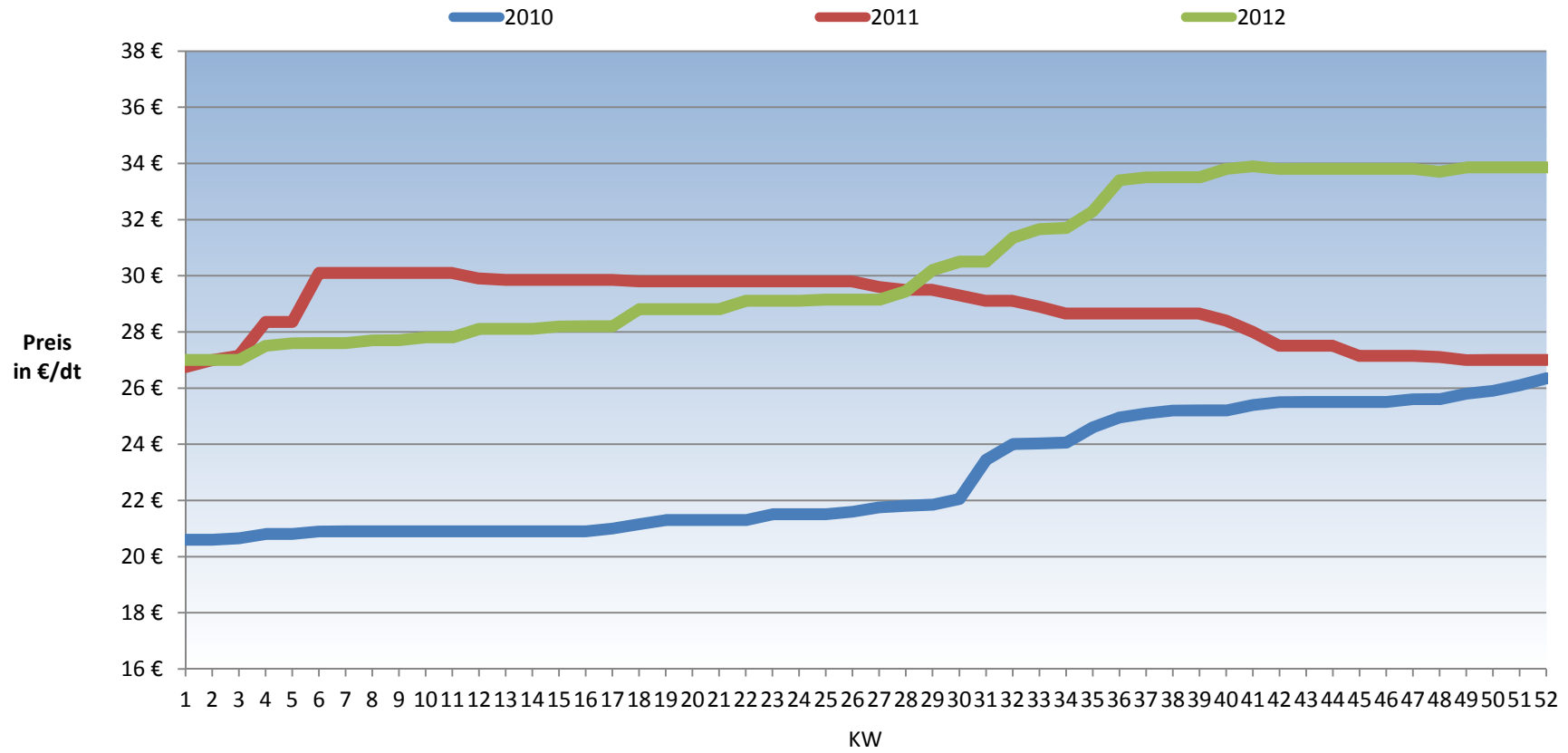
Vormastfutter



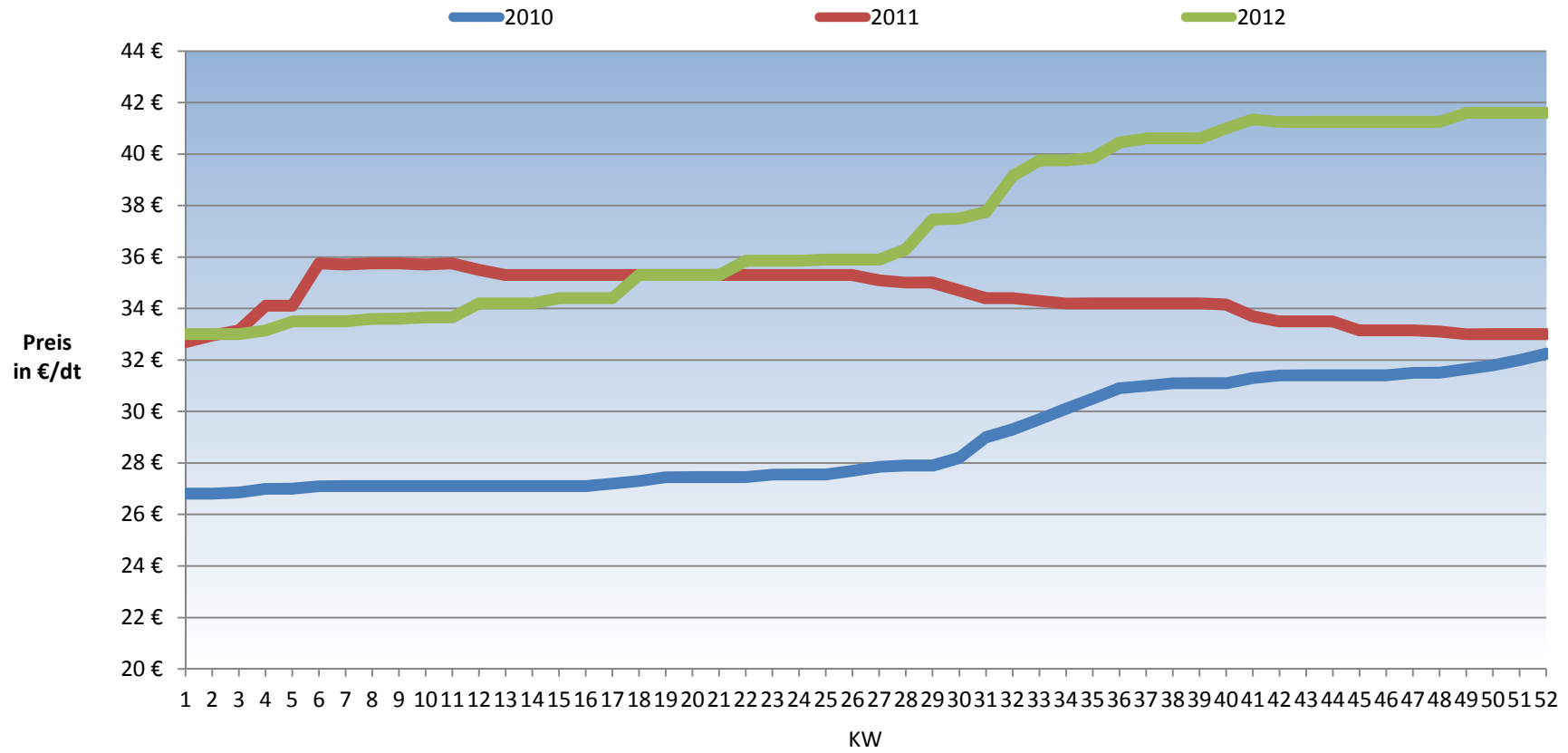
Endmastfutter



Legehennenalleinfutter



Hähnchenmastfutter



Putenmastfutter (P4)

