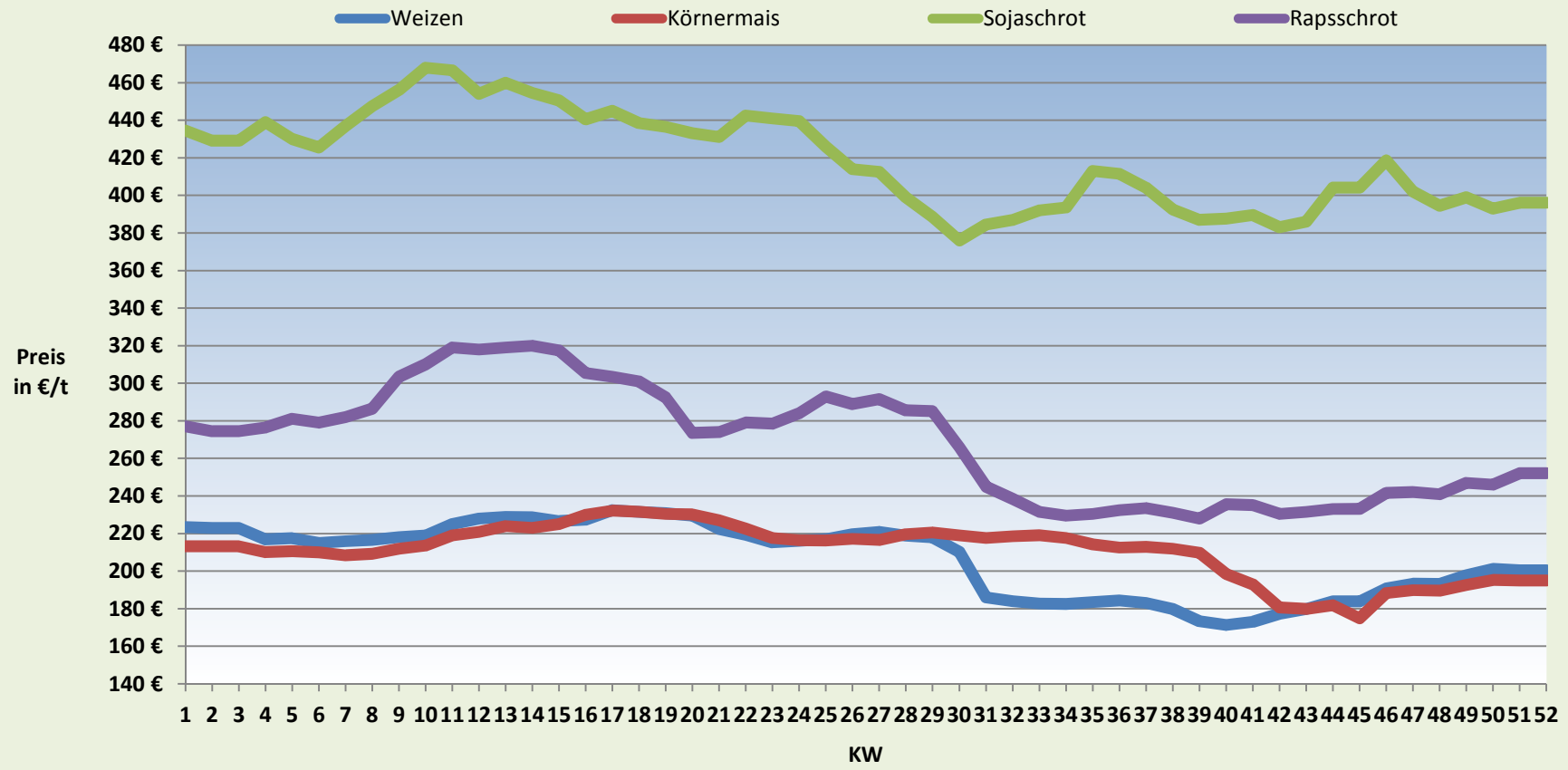
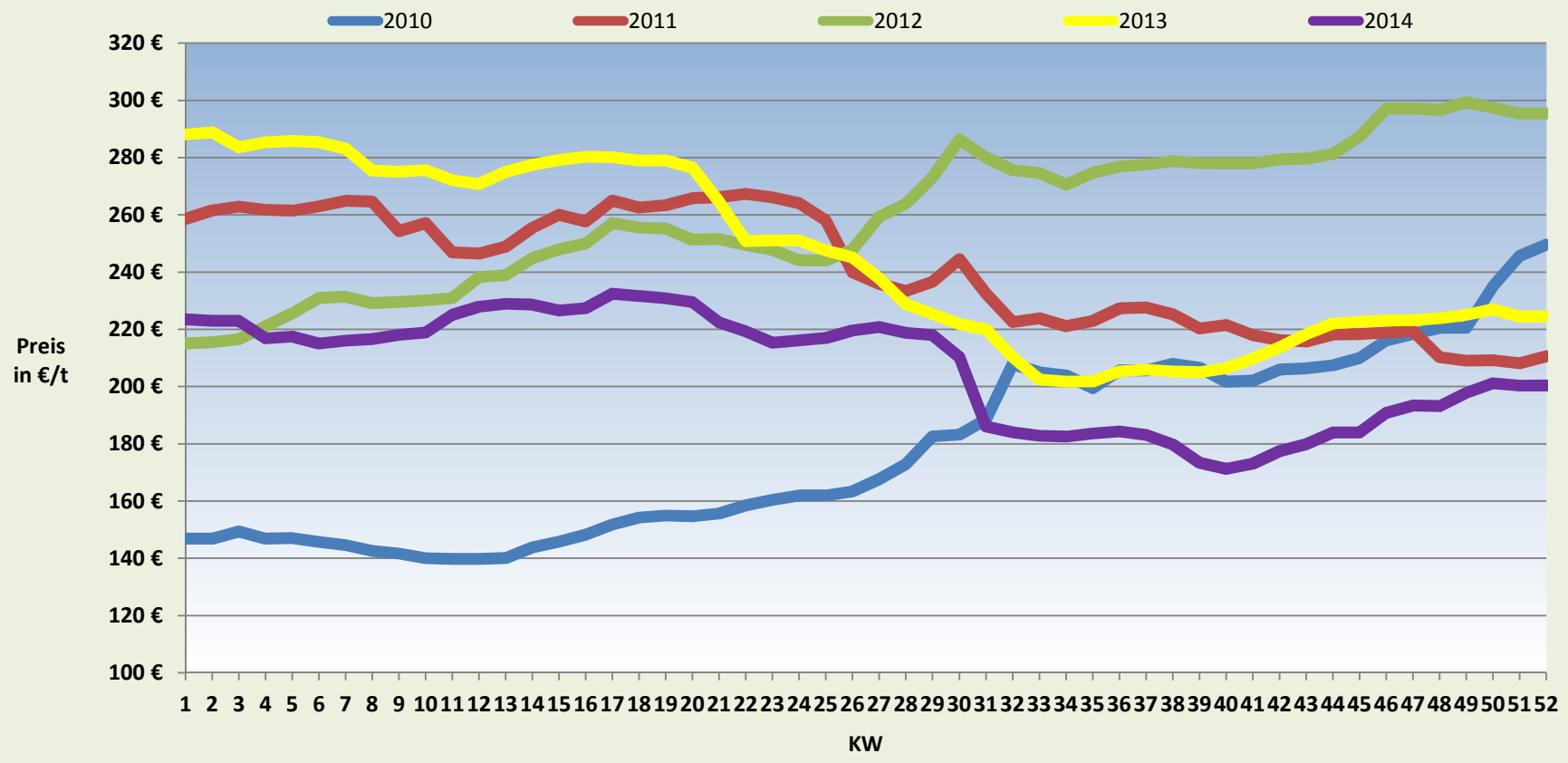


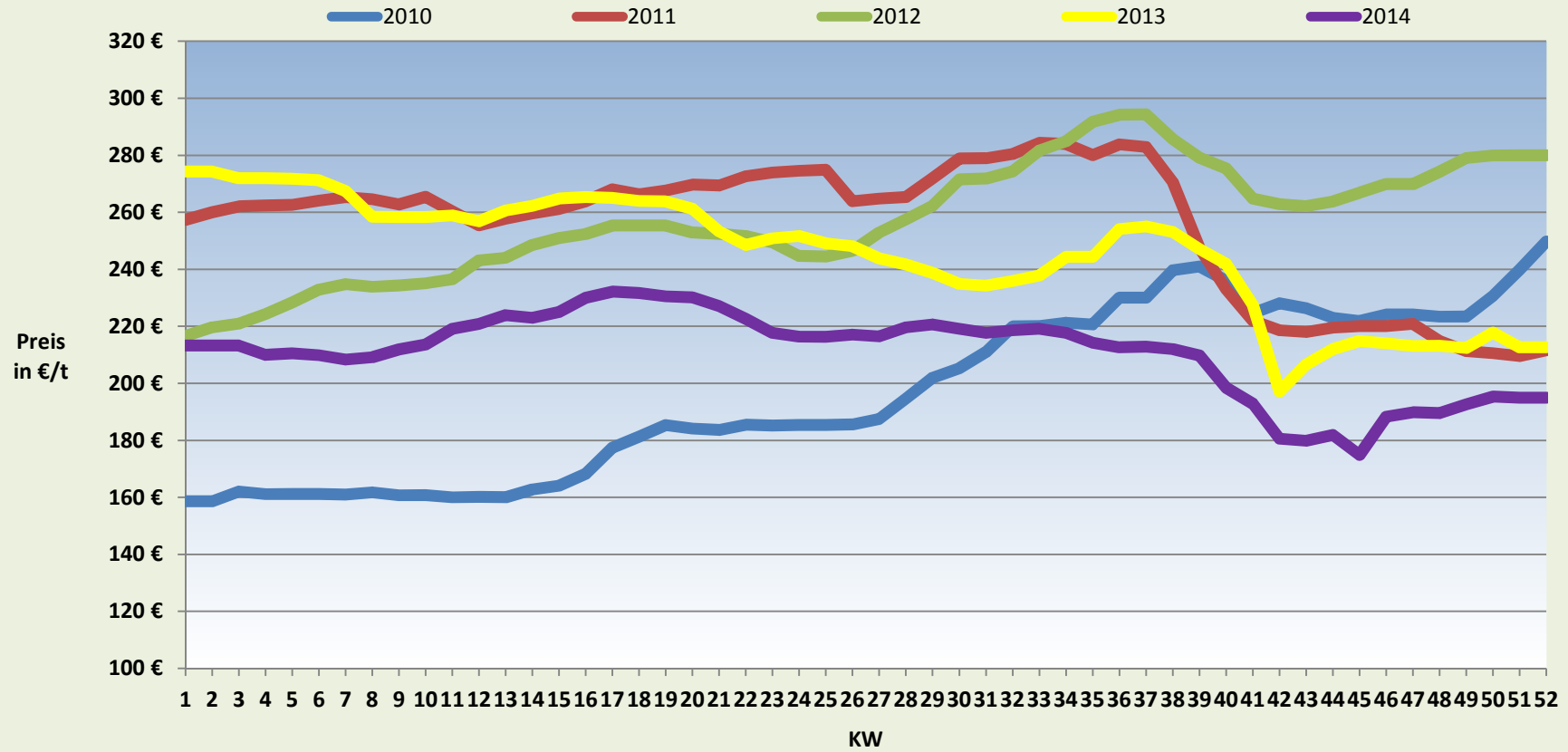
### Futtermittelkomponenten 2014



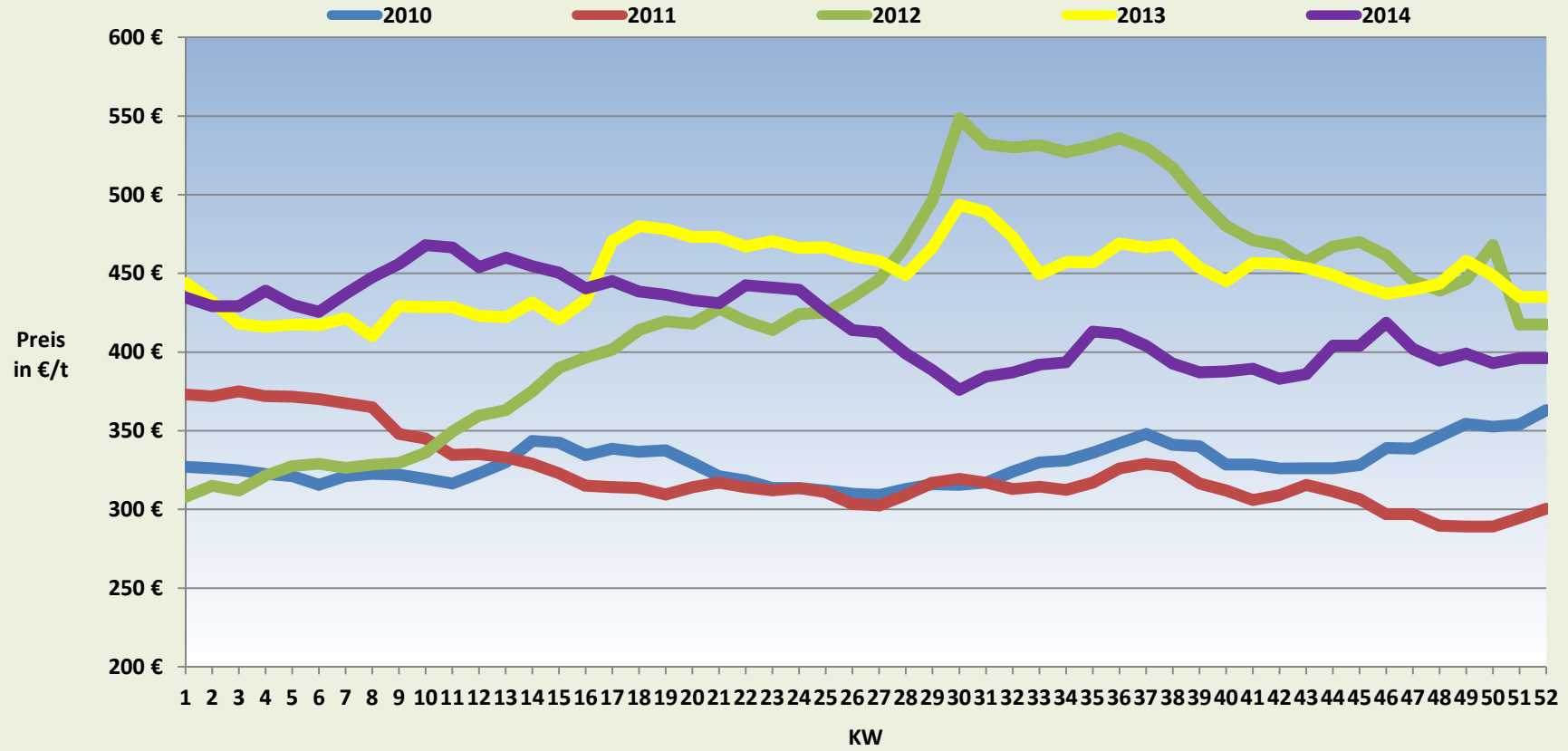
### Weizenpreisentwicklung



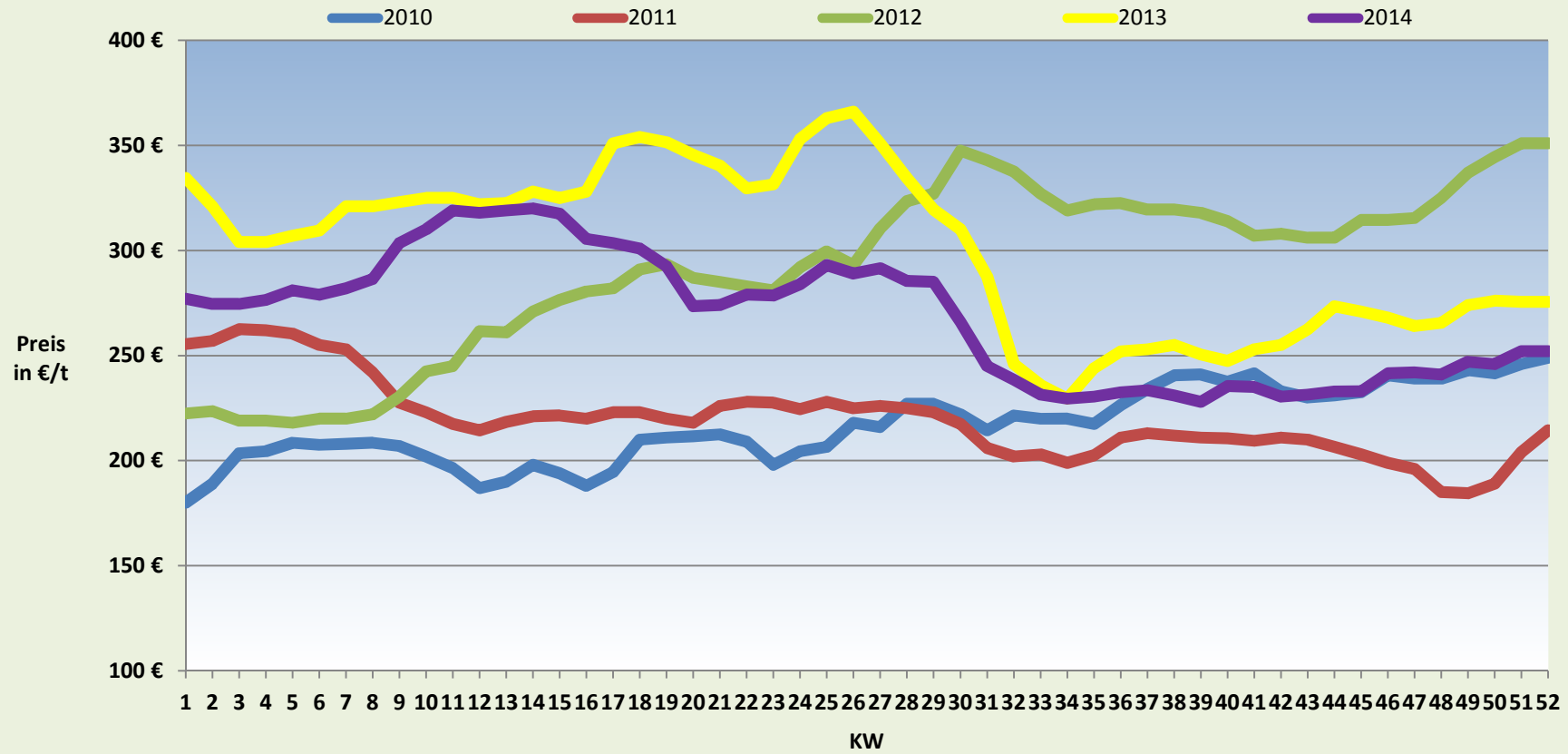
### Körnermaispreisentwicklung



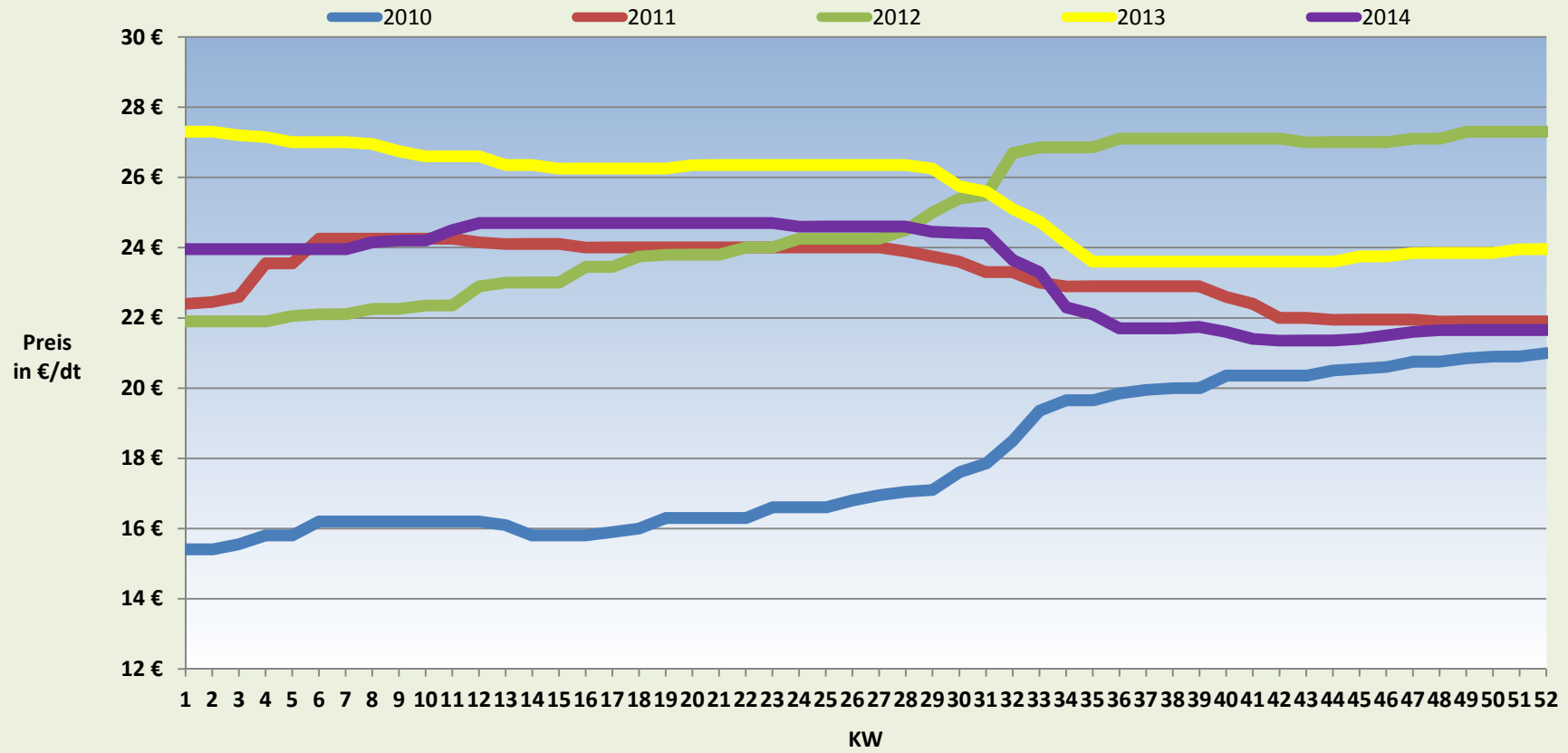
### Sojapreisentwicklung



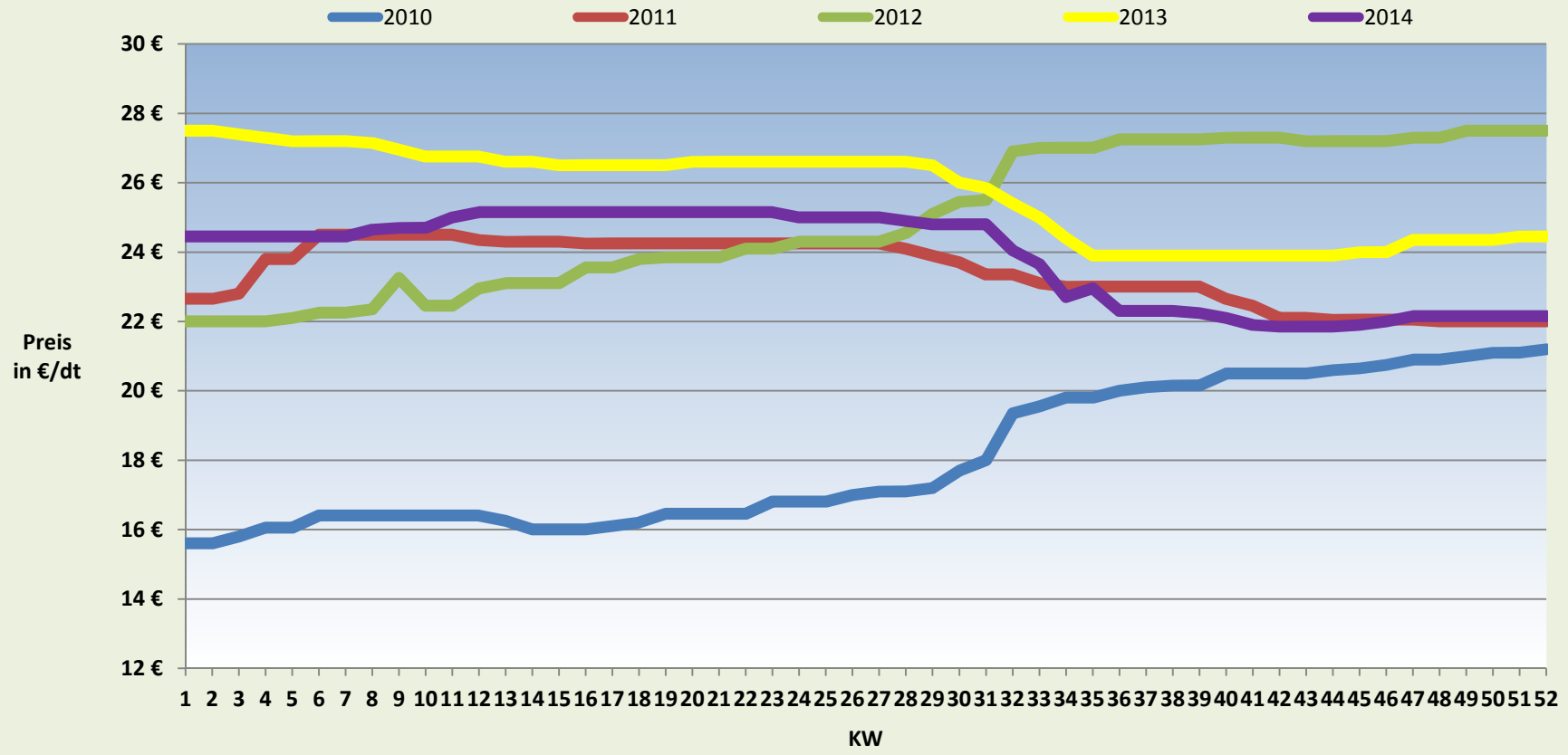
### Rapspreisentwicklung



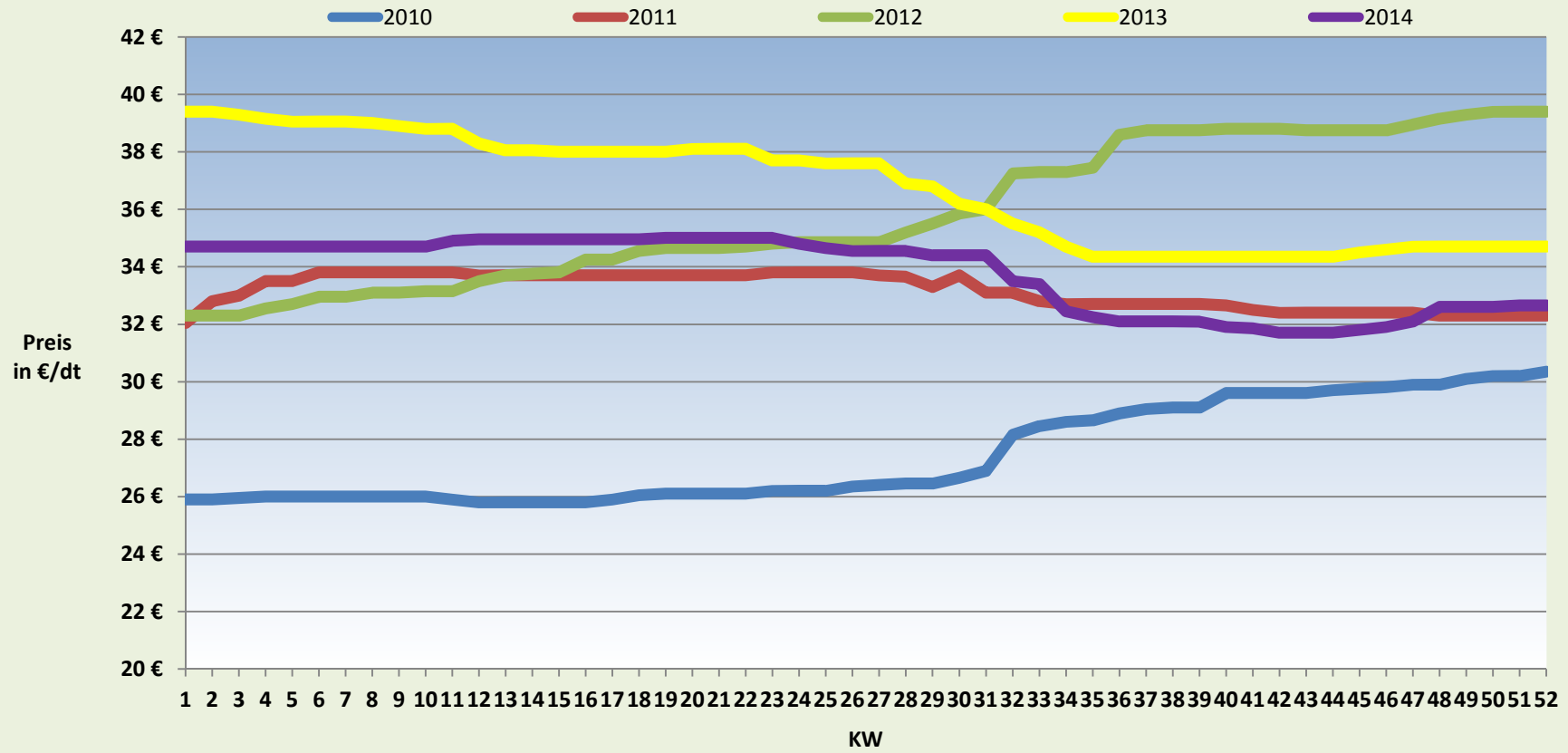
### Milchleistungsfutter (18/III)



### Bullenmastfutter (20/III)

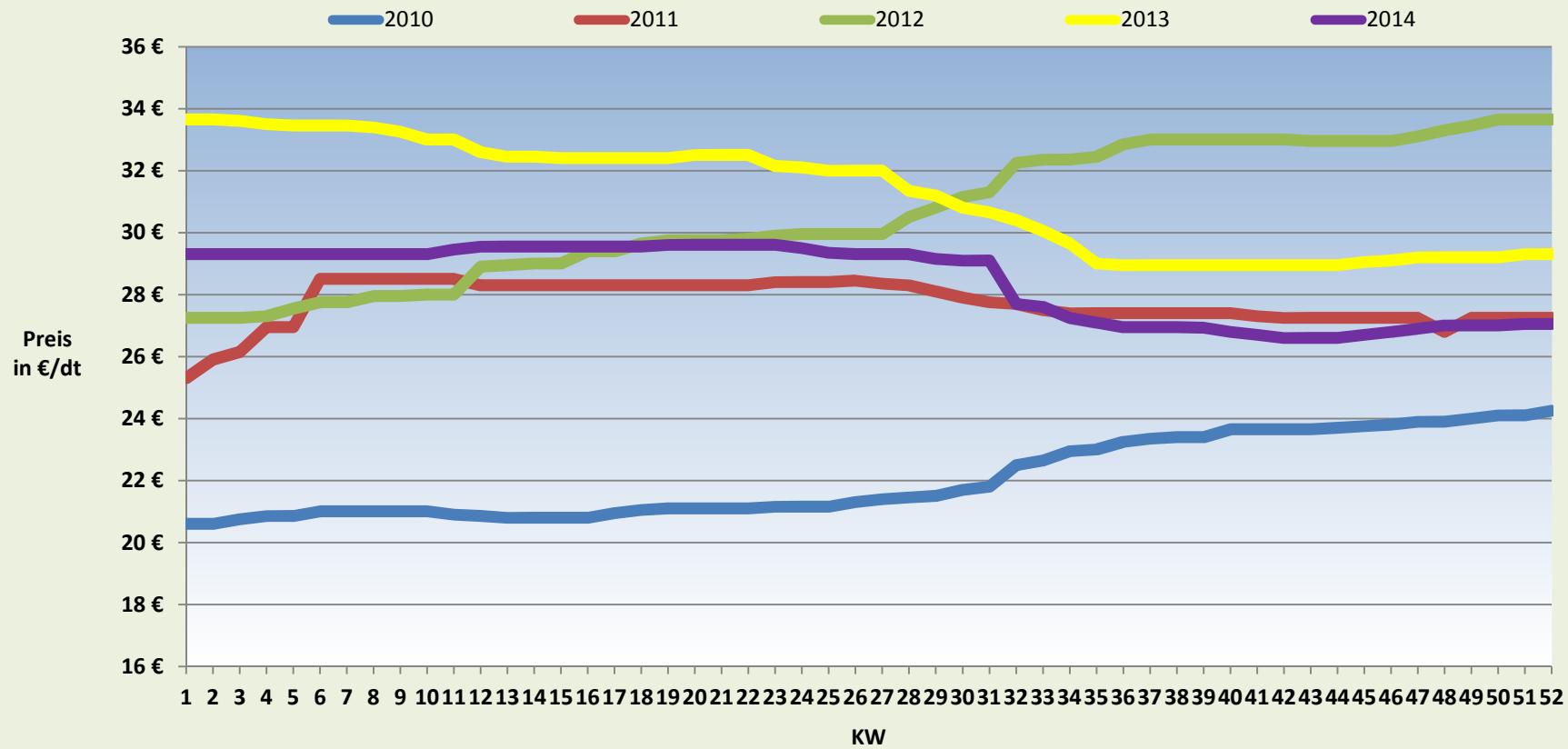


### Ferkelaufzuchtfutter

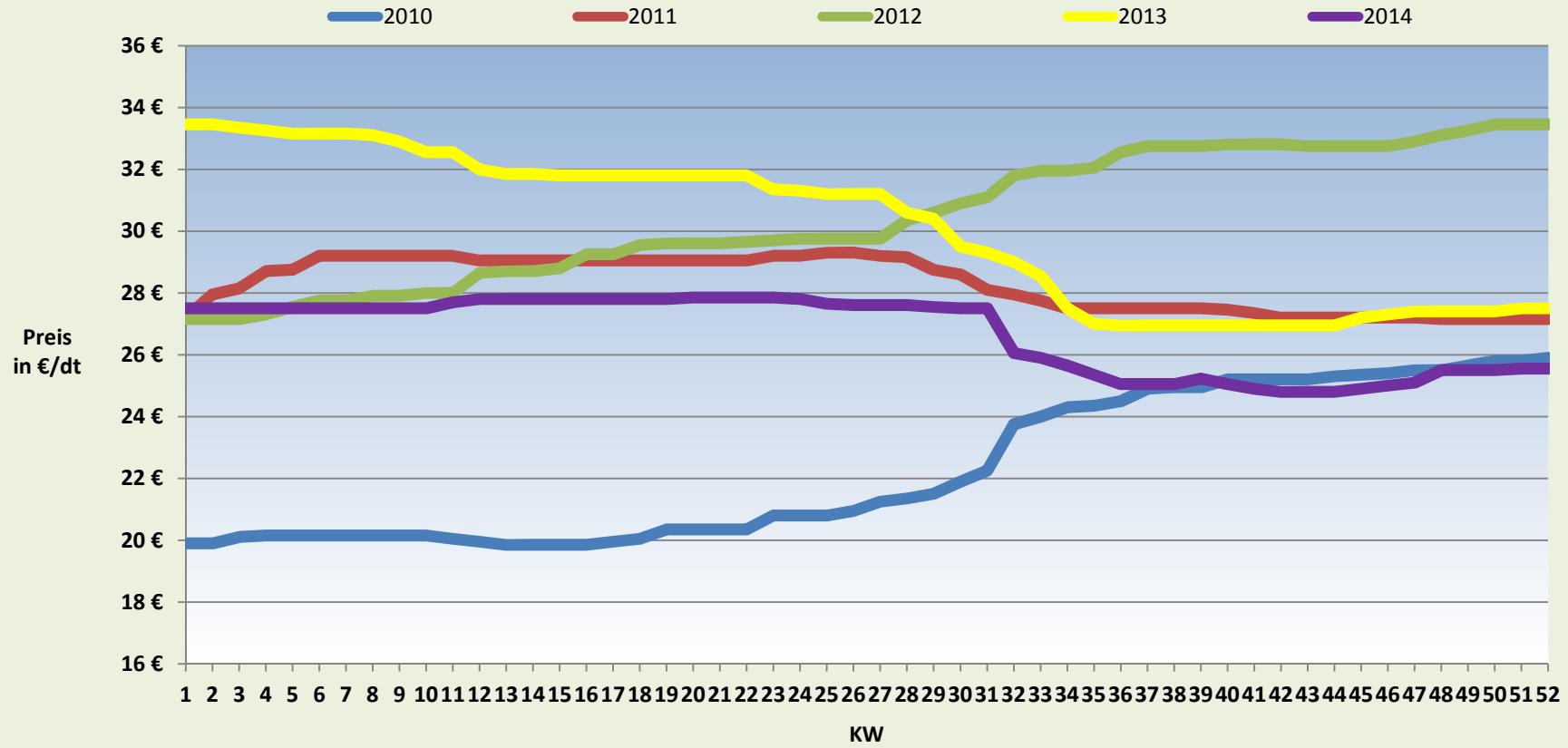




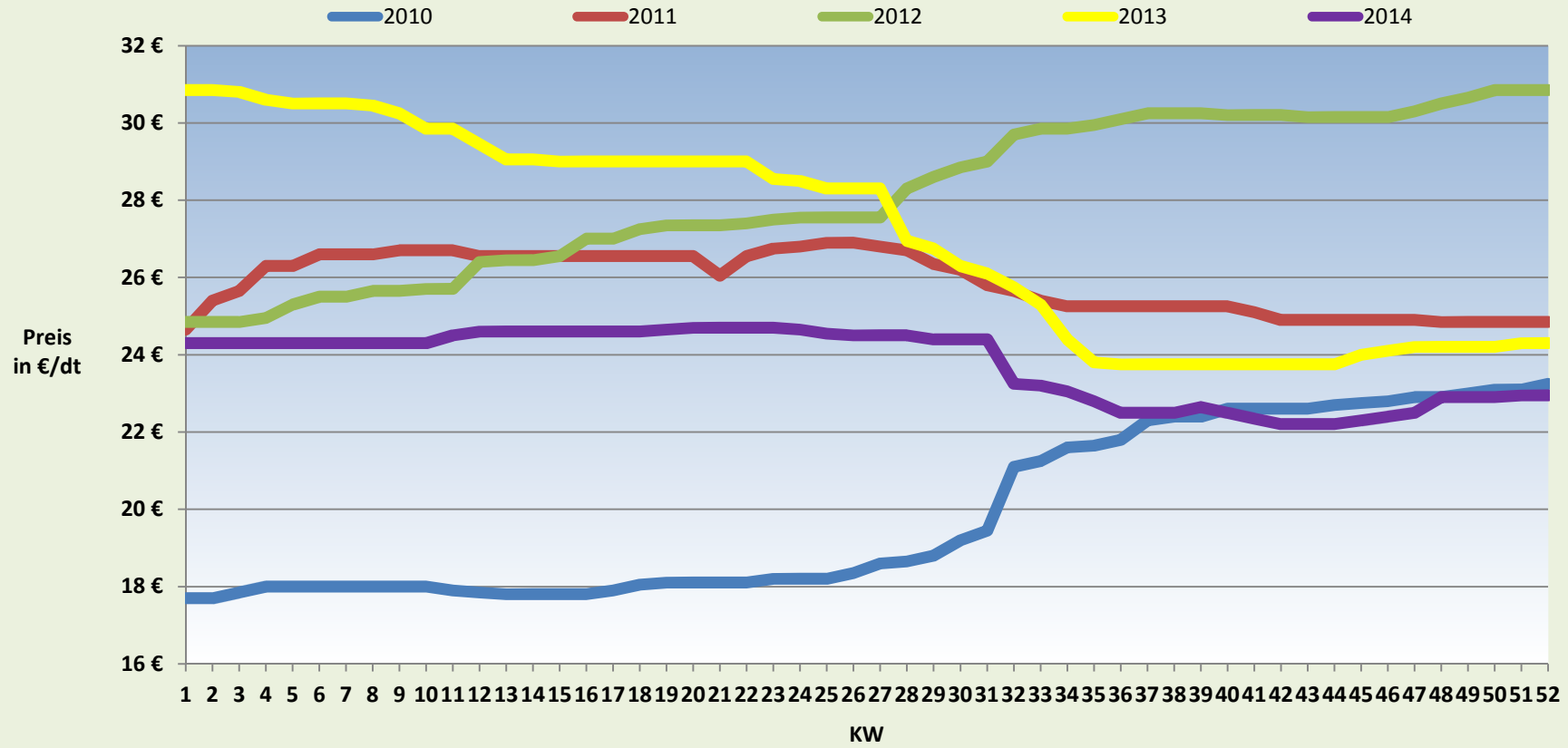
### Sauenalleinfutter



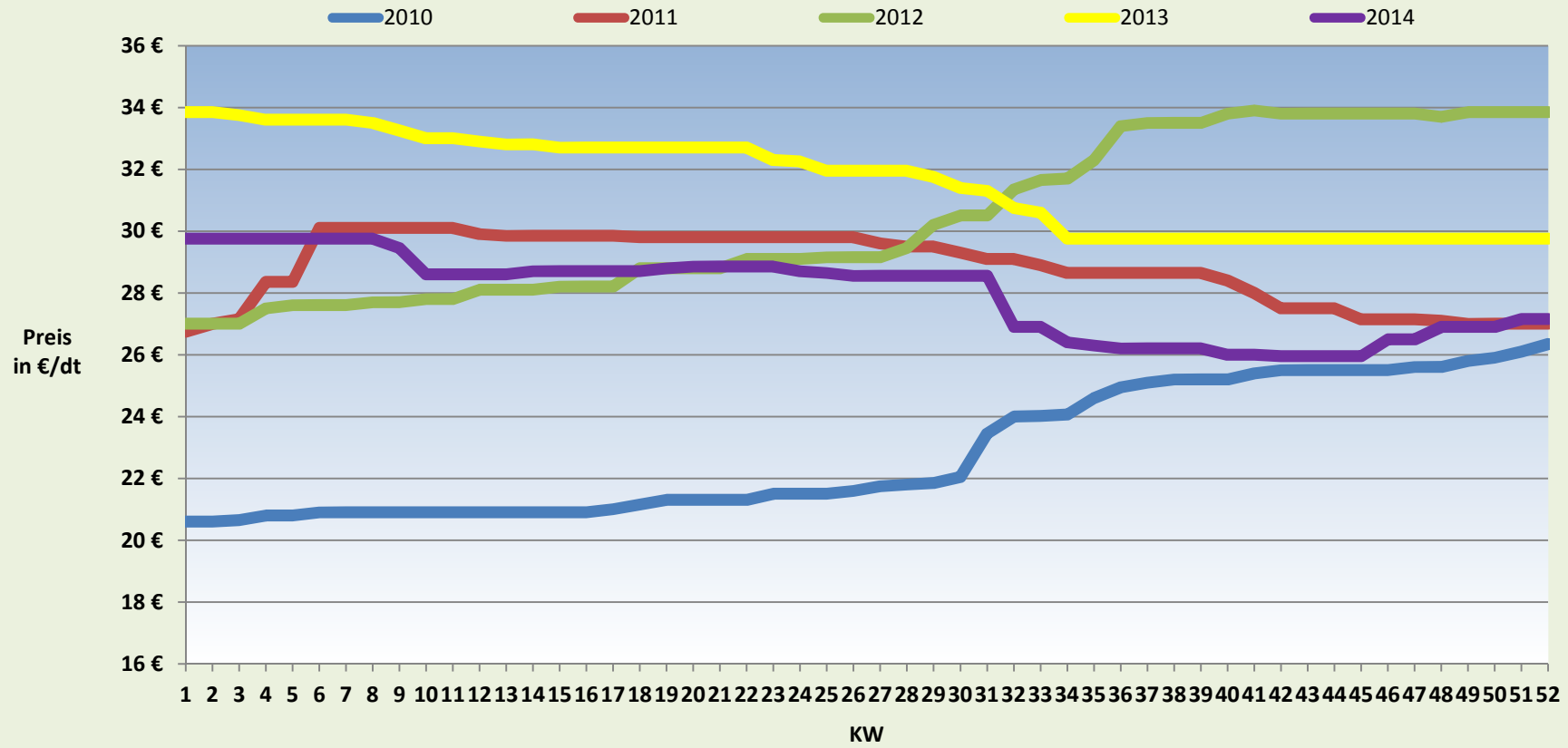
### Vormastfutter



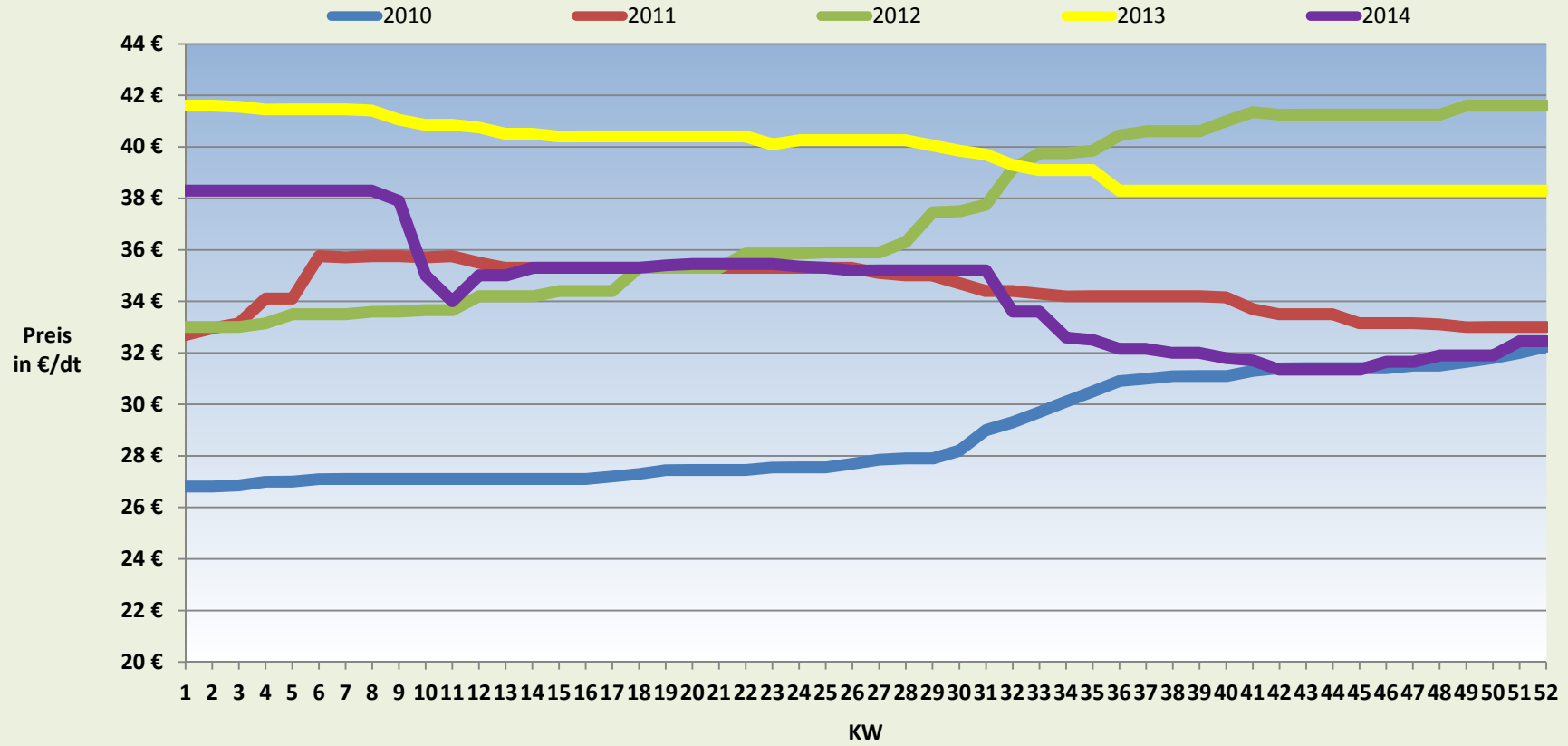
### Endmastfutter



### Legehennenalleinfutter



### Hähnchenmastfutter



### Putenmastfutter (P4)

